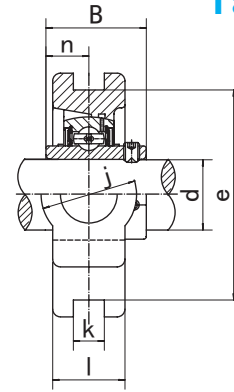
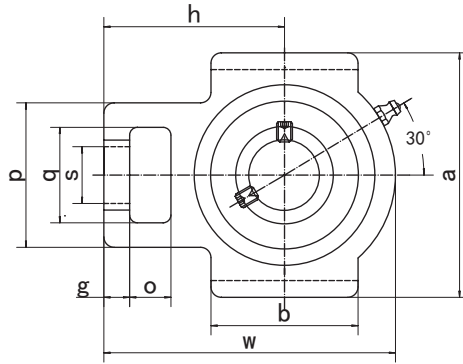


**UCST2(Normal-duty)**

**Take-up Units**



Unit NO.	Dimensions ( mm / in. )																Bearing No.	Housing No.	Weight (kg)
	d	o	g	p	q	s	b	k	e	a	w	j	l	h	B	n			
UCST201 201-8	12 1/2	16 5/8	10 25/64	51 1-1/64	32 1-1/4	19 3/4	51 2-1/64	13.5 17/32	76 2-63/64	89 3-1/2	94 3-11/16	32 1-1/4	24 15/16	60 2-13/32	31 1 2205	12.7 0 500	UC201 UC201-8	ST201	0 80 0 80
UCST202 202-9 202-10	15 9/16 5/8	16 5/8	10 25/64	51 1-1/64	32 1-1/4	19 3/4	51 2-1/64	13.5 17/32	76 2-63/64	89 3-1/2	94 3-11/16	32 1-1/4	24 15/16	60 2-13/32	31 1 221	12.7 0 500	UC202 UC202-9 UC202-10	ST202	0 83 0 83 0 83
UCST203 203-11	17 11/16	16 5/8	10 25/64	51 1-1/64	32 1-1/4	19 3/4	51 2-1/64	13.5 17/32	76 2-63/64	89 3-1/2	94 3-11/16	32 1-1/4	24 15/16	60 2-13/32	31 1 2205	12.7 0 500	UC203 UC203-11	ST203	0 82 0 82
UCST204 204-12	20 3/4	16 5/8	10 25/64	51 1-1/64	32 1-1/4	19 3/4	51 2-1/64	13.5 17/32	76 2-63/64	89 3-1/2	94 3-11/16	32 1-1/4	24 15/16	60 2-13/32	31 1 2205	12.7 0 500	UC204 UC204-12	ST204	0 80 0 80
UCST205 205-13 205-14 205-15 205-16	25 13/16 7/8 15/16 1	16 5/8	10 25/64	51 1-1/64	32 1-1/4	22 55/64	51 2-1/64	13.5 17/32	76 2-63/64	89 3-1/2	97 3-13/16	32 1-1/4	24 15/16	62 2-7/16	34.1 1 3425	14.3 0 563	UC205 UC205-13 UC205-14 UC205-15 UC205-16	ST205	0 79 0 82 0 81 0 79 0 78
UCST206 206-17 206-18 206-19 206-20	30 1-1/16 1-1/8 1-3/16 1-1/4	16 5/8	10 25/64	56 2-7/32	37 1-15/32	22 55/64	57 2-1/4	13.5 17/32	89 3-1/2	102 4-1/64	113 4-29/64	37 1-29/64	24 15/16	70 2-3/4	38.1 1 5000	15.9 0 626	UC206 UC206-17 UC206-18 UC206-19 UC206-20	ST206	1 08 1 09 1 10 1 08 1 07
UCST207 207-20 207-21 207-22 207-23	35 1-1/4 1-5/16 1/3/8 1-7/16	16 5/8	13 33/64	64 2-33/64	37 1-27/64	22 55/64	64 2-33/64	13.5 17/32	89 3-1/2	102 4-1/64	129 5-5/64	37 1-29/64	30 1-3/16	78 3-5/64	42.9 1 6890	17.5 0 689	UC207 UC207-20 UC207-21 UC207-22 UC207-23	ST207	1 55 1 62 1 59 1 56 1 53
UCST208 208-24 208-25	40 1-1/2 1-9/16	19 3/4	16 5/8	83 3-17/64	49 1-15/16	29 1-9/64	83 3-17/64	17.5 11/16	102 4-1/64	114 4-31/64	144 5-43/64	49 1-15/16	33 1-19/64	89 3-1/2	49.2 1 9370	19 0 748	UC208 UC208-24 UC208-25	ST208	2 29 2 33 2 30
UCST209 209-26 209-27 209-28	45 1-5/8 1-11/16 1-3/4	19 3/4	16 5/8	83 3-17/64	49 1-15/16	29 1-9/64	83 3-17/64	17.5 11/16	102 4-1/64	117 4-39/64	144 5-43/64	49 1-15/16	35 1-3/8	87 3-27/64	49.2 1 9370	19 0 748	UC209 UC209-26 UC209-27 UC209-28	ST209	2 32 2 42 2 38 2 34
UCST210 210-29 210-30 210-31 210-32	50 1-13/16 1-7/8 1-15/16 2	19 3/4	16 5/8	83 3-17/64	49 1-15/16	29 1-9/64	83 3-17/64	17.5 11/16	102 4-1/64	117 4-39/64	149 5-55/64	49 1-15/16	35 1-3/8	90 3-35/64	51.6 2 0315	19 0 748	UC210 UC210-29 UC210-30 UC210-31 UC210-32	ST210	2 36 2 48 2 43 2 38 2 34
UCST211 211-32 211-33 211-34 211-35	55 2 2-1/16 2-1/8 2-3/16	25 63/64	19 3/4	102 4-1/64	64 2-1/32	35 1-3/8	95 3-3/4	27 1-1/16	130 5-1/8	146 5-3/4	171 6-47/64	64 2-33/64	41 1-5/8	106 4-11/64	55.6 2 1890	22.2 0 874	UC211 UC211-32 UC211-33 UC211-34 UC211-35	ST211	3 89 4 04 3 98 3 94 3 87
UCST212 212-36 212-37 212-38 212-39	60 2-1/4 2-5/16 2-3/8 2-7/16	32 1-17/64	19 3/4	102 4-1/64	64 2-1/32	35 1-3/8	102 4-1/64	27 1-1/16	130 5-1/8	146 5-3/4	194 7-41/64	64 2-33/64	46 1-13/16	119 4-11/16	65.1 2 5630	25.4 1 000	UC212 UC212-36 UC212-37 UC212-38 UC212-39	ST212	4 82 4 95 4 87 4 80 4 73
UCST213 213-40 213-41	65 2-1/2 2-9/16	32 1-17/64	21 53/64	111 4-3/8	70 2-3/4	41 1-39/64	121 4-49/64	27 1-1/16	151 5-15/16	167 6-37/64	224 8-13/16	70 2-3/4	51 2	137 5-25/64	65.1 2 5630	25.4 1 000	UC213 UC213-40 UC213-41	ST213	7 36 7 45 7 36