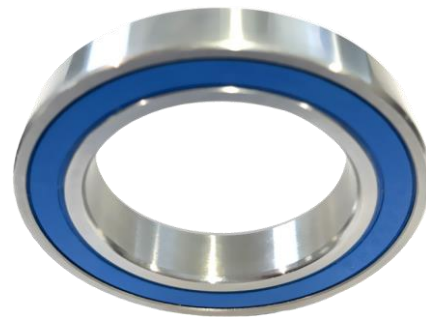




STAINLESS STEEL RADIAL BALL BEARINGS SS61900 SERIES



Part Number	Bore Diameter mm	Outer Diameter mm	Width mm	Dynamic Load Rating C (N)	Static Load Rating C0 (N)	Limiting Speed Grease r/min	Weight kg
SS61900	10	22	6	1500	700	30000	0.010
SS61900-ZZ	10	22	6	1500	700	30000	0.010
SS61900-2RS	10	22	6	1500	700	19000	0.010
SS61901	12	24	6	1700	1000	27000	0.011
SS61901-ZZ	12	24	6	1700	1000	27000	0.011
SS61901-2RS	12	24	6	1700	1000	18000	0.011
SS61902	15	28	7	3000	2000	24000	0.016
SS61902-ZZ	15	28	7	3000	2000	24000	0.016
SS61902-2RS	15	28	7	3000	2000	16000	0.016
SS61903	17	30	7	3300	2300	22000	0.018
SS61903-ZZ	17	30	7	3300	2300	22000	0.018
SS61903-2RS	17	30	7	3300	2300	14000	0.018
SS61904	20	37	9	4800	3600	19000	0.038
SS61904-ZZ	20	37	9	4800	3600	19000	0.038
SS61904-2RS	20	37	9	4800	3600	12000	0.038
SS61905	25	42	9	5000	3900	16000	0.045
SS61905-ZZ	25	42	9	5000	3900	16000	0.045
SS61905-2RS	25	42	9	5000	3900	10000	0.045
SS61906	30	47	9	5500	4500	14000	0.051
SS61906-ZZ	30	47	9	5500	4500	14000	0.051
SS61906-2RS	30	47	9	5500	4500	8500	0.051
SS61907-ZZ	35	55	10	7200	6100	12000	0.080
SS61907-2RS	35	55	10	7200	6100	7500	0.080
SS61908-ZZ	40	62	12	10400	9100	11000	0.110
SS61908-2RS	40	62	12	10400	9100	6700	0.110
SS61909-ZZ	45	68	12	7600	6600	9800	0.140
SS61909-2RS	45	68	12	7600	6600	6000	0.140
SS61910-ZZ	50	72	12	11000	10200	8900	0.140
SS61910-2RS	50	72	12	11000	10200	5600	0.140
SS61911-2RS	55	80	13	11900	11200	5000	0.190
SS61912-2RS	60	85	13	12400	11800	4500	0.200
SS61913-2RS	65	90	13	13100	13100	4300	0.220
SS61914-2RS	70	100	16	17900	17900	4000	0.350
SS61915-2RS	75	105	16	18200	18900	3600	0.370
SS61916-2RS	80	110	16	18800	20000	3400	0.400