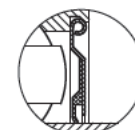
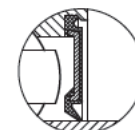
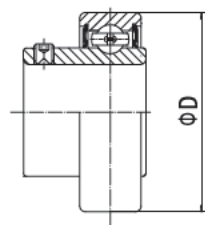
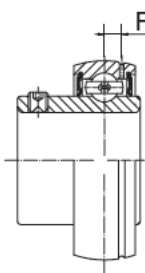
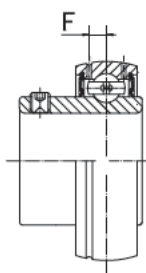
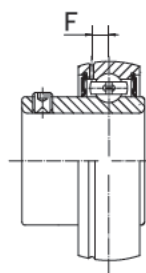
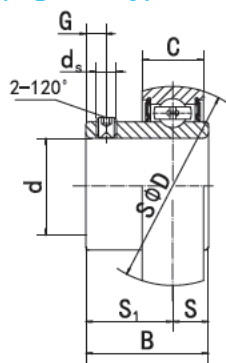


SB2 (Light-duty)

Ball Bearings



SB2

SB2-G

SB2-G₂

SB2-RG

CSB2

J type seal (Standard)

H type seal (Optional)

Bearing NO.	Dimensions (mm / in.)									Dynamic load ratings (N)	Static load ratings (N)	Weight (kg)
	d	D	B	C	S	S ₁	d _s	F	G			
SB201 201-8	12 1/2	40 1.5748	22.0 0.8661	12 0.4724	6.0 0.236	16.0 0.630	M5X0.8 10-32UNF	3.4 0.134	4.5 0.177	9600	4600	0.10 0.10
SB202 202-9 202-10	15 9/16 5/8	40 1.5748	22 0.8661	12 0.4724	6.0 0.236	16.0 0.630	M5X0.8 10-32UNF	3.4 0.134	4.5 0.177			9600
SB203 203-11	17 11/16	40 1.5748	22.0 0.8661	12 0.4724	6.0 0.236	16.0 0.630	M5X0.8 10-32UNF	3.4 0.134	4.5 0.177	9600	4600	0.09 0.09
SB204 204-12	20 3/4	47 1.8504	25.0 0.9843	14 0.5512	7.0 0.276	18.0 0.709	M6X1 1/4-28UNF	4.2 0.165	4.5 0.177			12800
SB205 205-13 205-14 205-15 205-16	25 13/16 7/8 15/16 1	52 2.0472	27 1.063	15 0.5906	7.5 0.295	19.5 0.768	M6X1 1/4-28UNF	4.3 0.169	5.5 0.217	14000	7850	0.16 0.19 0.18 0.17 0.16
SB206 206-17 206-18 206-19 206-20	30 1-1/16 1-1/8 1-3/16 1-1/4	62 2.4409	30 1.1811	16 0.6299	8.0 0.315	22.0 0.866	M6X1 1/4-28UNF	5 0.197	6 0.236			19450
SB207 207-20 207-21 207-22 207-23	35 1-1/4 1-5/16 1-3/8 1-7/16	72 2.8346	32 1.2598	17 0.6693	8.5 0.335	23.5 0.925	M8X1 5/16-24UNF	5.6 0.220	6.5 0.256	25700	15200	0.36 0.41 0.39 0.36 0.35
SB208 208-24 208-24	40 1-1/2 1-9/16	80 3.1496	34 1.3386	18 0.7087	9.0 0.354	25.0 0.984	M8X1 5/16-24UNF	5.9 0.232	7 0.276			29500
SB209 209-26 209-27 209-28	45 1-5/8 1-11/16 1-3/4	85 3.3465	41.2 1.622	19 0.748	10.2 0.402	31.0 1.22	M8X1 5/16-24UNF	6.1 0.240	8.2 0.323	32700	20900	0.54
SB210 210-29 210-30 210-31 210-32	50 1-13/16 1-7/8 1-15/16 2	90 3.5433	43.5 1.7126	20 0.7874	10.9 0.429	32.6 1.283	M10X1 3/8-24UNF	6.5 0.256	9.2 0.362			35000
SB211 211-32 211-33 211-34 211-35	55 2 2-1/16 2-1/8 2-3/16	100 3.937	45.3 1.7835	21 0.8268	11.8 0.465	33.5 1.319	M10X1 3/8-24UNF	7 0.276	9.8 0.386	43300	29200	0.81
SB212 212-36 212-37 212-38 212-39	60 2-1/4 2-5/16 2-3/8 2-7/16	110 4.3307	53.7 2.1142	22 0.8661	14.9 0.587	38.8 1.528	M10X1 3/8-24UNF	7.4 0.291	9.8 0.386			47700