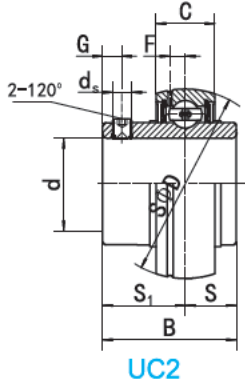
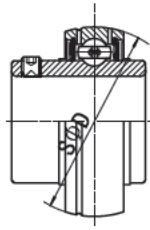


UC2 (Normal-duty)

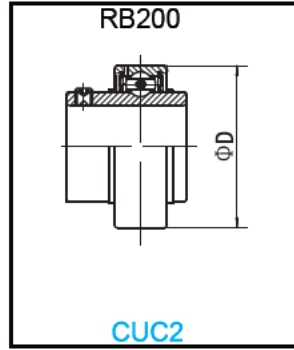
Ball Bearings



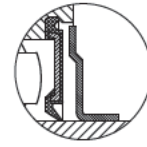
UC2



UC2-G<sub>2</sub>



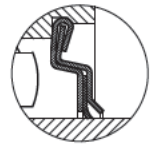
CUC2



SL Dual seal (Standard)



L<sub>3</sub> Triple-lip seal (Optional)



F seal (Optional)

Bearing NO.	Dimensions ( mm / in. )									Dynamic load ratings (N)	Static load ratings (N)	Weight (kg)							
	d	D	B	C	S	S <sub>1</sub>	G	d <sub>s</sub>	F										
UCS201 201-8	12 1/2	40	27.4	14.0	11.5	15.9	4.0	M5x0.8	3.7	9600	4600	0.12							
UCS202 202-9 202-10	15 9/16 5/8											1.0787	0.5512	0.4528	0.626	0.157	10-32UNF	0.146	0.11 0.11
UCS203 203-11	17 11/16											0.10 0.10							
UC201 201-8	12 1/2	47	31.0	17.0	12.7	18.3	4.8	M6x1	3.7	12800	6600	0.20 0.19							
UC202 202-9 202-10	15 9/16 5/8											1.2205	0.6693	0.500	0.720	0.189	1/4-28UNF	0.146	0.19 0.19
UC203 203-11	17 11/16											0.18 0.17							
UC204 204-12	20 3/4	47 1.8504	31.0 1.2205	17.0 0.6693	12.7 0.500	18.3 0.720	4.8 0.189	M6x1 1/4-28UNF	3.7 0.146	12800	6600	0.16 0.16							
UC205 205-13 205-14 205-15 205-16	25 13/16 7/8 15/16 1	52 2.0472	34.1 1.3425	17.0 0.6693	14.3 0.563	19.8 0.780	5.0 0.197	M6x1 1/4-28UNF	3.9 0.154	14000	7850	0.19 0.23 0.22 0.20 0.19							
UC206 206-17 206-18 206-19 206-20	30 1-1/16 1-1/8 1-3/16 1-1/4	62 2.4409	38.1 1.5000	19.0 0.7480	15.9 0.626	22.2 0.874	5.0 0.197	M6x1 1/4-28UNF	5.0 0.197	19450	11250	0.30 0.31 0.32 0.30 0.29							
UC207 207-20 207-21 207-22 207-23	35 1-1/4 1-5/16 1-3/8 1-7/16	72 2.8346	42.9 1.6890	20.0 0.7874	17.5 0.689	25.4 1.000	7.0 0.276	M8x1 5/16-24UNF	5.7 0.224	25700	15200	0.45 0.51 0.48 0.45 0.42							
UC208 208-24 208-25	40 1-1/2 1-9/16	80 3.1496	49.2 1.9370	21.0 0.8268	19.0 0.748	30.2 1.189	8.0 0.315	M8x1 5/16-24UNF	6.2 0.244	29500	18100	0.60 0.64 0.61							
UC209 209-26 209-27 209-28	45 1-5/8 1-11/16 1-3/4	85 3.3465	49.2 1.9370	22.0 0.8661	19.0 0.748	30.2 1.189	8.0 0.315	M8x1 5/16-24UNF	6.4 0.252	32700	20900	0.65 0.75 0.71 0.67							
UC210 210-29 210-30 210-31 210-32	50 1-13/16 1-7/8 1-15/16 2	90 3.5433	51.6 2.0315	24.0 0.9449	19.0 0.748	32.6 1.283	10.0 0.394	M10x1 3/8-24UNF	6.5 0.256	35000	23200	0.75 0.87 0.82 0.77 0.73							
UC211 211-32 211-33 211-34 211-35	55 2 2-1/16 2-1/8 2-3/16	100 3.9370	55.6 2.1890	25.0 0.9843	22.2 0.874	33.4 1.315	10.0 0.394	M10x1 3/8-24UNF	7.0 0.276	43300	29200	0.99 1.14 1.08 1.07 0.97							
UC212 212-36 212-37 212-38 212-39	60 2-1/4 2-5/16 2-3/8 2-7/16	110 4.3307	65.1 2.5630	27.0 1.0630	25.4 1.000	39.7 1.563	10.0 0.394	M10x1 3/8-24UNF	7.6 0.299	47700	32800	1.32 1.52 1.44 1.37 1.30							
UC213 213-40 213-41	65 2-1/2 2-9/16	120 4.3307	65.1 2.5630	28.0 1.1024	25.4 1.000	39.7 1.563	10.0 0.394	M10x1 3/8-24UNF	8.5 0.335	57200	40000	1.70 1.79 1.70							
UC214 214-42 214-43 214-44	70 2-5/8 2-11/16 2-3/4	125 4.9213	74.6 2.9370	29.0 1.1417	30.2 1.189	44.4 1.748	12.0 0.472	M12x1.5 7/16-20UNF	8.9 0.350	62100	44800	1.94 2.15 2.05 1.95							
UC215 215-45 215-46 215-47 215-48	75 2-13/16 2-7/8 2-15/16 3	130 5.1181	77.8 3.0630	30.0 1.1811	33.3 1.311	44.5 1.752	12.0 0.472	M12x1.5 7/16-20UNF	9.2 0.362	66200	49300	2.16 2.16 2.41 2.30 2.10							
UC216 216-49 216-50 216-51	80 3-1/16 3-1/8 3-3/16	140 5.5118	82.6 3.2520	32.0 1.2598	33.3 1.311	49.3 1.9409	12.0 0.472	M12x1.5 7/16-20UNF	9.5 0.374	72600	53300	2.65 2.83 2.70 2.57							
UC217 217-52 217-53 217-55	85 3-1/4 3-5/16 3-7/16	150 5.9055	85.7 3.3740	34.0 1.3386	34.1 1.341	51.6 2.031	12.0 0.472	M12x1.5 7/16-20UNF	10.2 0.402	83300	63700	3.29 3.41 3.37 3.08							
UC218 218-56	90 3-1/2	160 6.2992	96.0 3.7795	36.0 1.4173	39.7 1.563	56.3 2.217	12.0 0.472	M12x1.5 1/2-20UNF	11.2 0.441	96000	71100	4.04 4.15							
UC220 220-64	100 4	180 7.0866	108 4.2520	40 1.5748	42.0 1.654	66.0 2.598	16 0.630	M14x1.5 9/16-18UNF	13.1 0.516	122000	92800	4.56 4.35							